



STREET SCENE EQUIPMENT, INC.

365 McCormick Avenue
Costa Mesa, Ca. 92626
Phone (714) 426-0590 Fax (714) 426-0591

950-70159
2003 - 2005
GMC SIERRA
GENERATION 2
BUMPER COVER

INSTALLATION INSTRUCTIONS

NOTE: Fit all parts before painting (See Special Instructions For Paint Prep.) Parts that have been installed, preped, or painted are not returnable.

VERY IMPORTANT ! Read and understand all directions and check the following parts list before starting installation.

PARTS LIST					
1	Bumper Cover	1	Instruction Sheet	6	S/S # 10 X 3/4" Screws
1	RT Template	1	Urethane Prep Sheet	1	Street Scene Decal
1	LT Template				

TOOL LIST	
Masking Tape, Drill Motor, Drill Bits, Air Saw Or Cut Off Wheel	

NOTE:

The OEM Bumper Cover Will Have To Be Modified TO Install Bumper Cover

NOTE:

Use Speed Grille Set P.N. 950-7X159 For This Bumper Cover

NOTE:

Pre-Fit Bumper Cover BEFORE Painting Follow Paint Prep Instructions Before Painting

1. Begin by removing the stock bumper cover. (This is not needed but recommended as it will be easier to cut.)
2. Cut out the templates and tape together. Place the template as shown on (Figure 1) Follow the light radius as a guide. Once you have 1 side cut out you can flip the template and use it on the opposite side. Be sure to leave strip shown in (Figure 2) as it will help it in keeping it's rigidity.
3. When you have both sides cut out test fit the new cover onto your old cover to make sure the fit is good prior to installation.
4. Once you are satisfied with the modification and fitment you are ready to finish the new cover to finish the installation.
5. Reinstall your stock bumper cover onto the vevhicle and fit the new cover onto your old one. Use the supplied hardward to bolt the new cover onto the tabs on the ends of the cover as shown in (Figure 3).
6. The install should be a very snug fit with no clearance issues if done right.

FIGURE 1



FIGURE 2

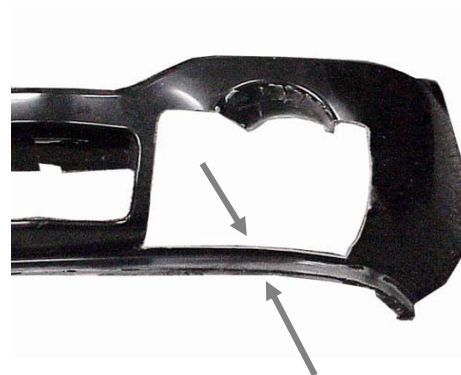


FIGURE 3

